

BEACONHOUSE INTERNATIONAL BACCALAUREATE PROGRAMME



Leaders and Pioneers in IB Education
Prospectus 2018-19



INTERNATIONAL BACCALAUREATE PROGRAMME



Dear Students/Parents,

This prospectus is designed to provide an overview of the International Baccalaureate® (IB) and its programmes at Beaconhouse.

In February 2012, TNS Beaconhouse in Lahore received authorisation for the IB Middle Years Programme. Since then Beaconhouse has launched its network of IB schools and will continue to roll out more IB programmes over the coming years.

Beaconhouse already offers a wide range of science, business and liberal arts subjects; with the introduction of the three IB Programmes - Primary Years, Middle Years and the Diploma Programme - the options available to you are increasing. Beyond subject choices, this means you learn through the IB's unique approach to pedagogy, curriculum and co-curricular offerings that will challenge and engage you in new ways.

The facilities available at any of our schools that offer IB programmes are in place to support this learning, and include an emphasis on technology, sports and extended library facilities. In particular, they support the IB's co-curricular components of creativity, activity and service at all levels.

We encourage you to learn more about IB programmes on offer and visit our schools to guide your decision. From our side, we can assure you that the IB programmes will broaden your horizons in ways that were previously unimaginable and will provide you with opportunities to excel well beyond your school years.

Yours truly,

A handwritten signature in blue ink, appearing to read 'Kasim', with a stylized flourish at the end.

Kasim Kasuri
Chief Executive

Beaconhouse aims to provide quality education of an international standard. We aim for excellence through quality management, quality training and quality teaching, bringing benefit to our students, the community and the wider world.

The International Baccalaureate®

aims to develop inquiring, knowledgeable and caring young people who help to create a better and more peaceful world through intercultural understanding and respect. To this end the organisation works with schools, governments and international organisations to develop challenging programmes of international education and rigorous assessment. These programmes encourage students across the world to become active, compassionate and lifelong learners who understand that other people, with their differences, can also be right.



TABLE OF CONTENTS

06	Tradition and Ambition
07	The International Baccalaureate® (IB)
10	The International Baccalaureate® (IB) at Beaconhouse
12	The IB Primary Years Programme (PYP)
24	The IB Middle Years Programme (MYP)
30	The IB Diploma Programme (DP)

TRADITION AND AMBITION

The Beaconhouse School System began in 1975 as Les Angeles Montessori Academy and is now a major force in the education world. Already established in the United Kingdom, Malaysia, Thailand, the Philippines, Pakistan, the UAE, Oman and Belgium, the Beaconhouse of today is one of the largest private school networks and currently educates over three hundred thousand students in eight countries.

As the world and the needs of the community transform at an ever-increasing rate, Beaconhouse endeavours to be open to change, and seeks to adapt, innovate and stay a step ahead of the expectations of society.

At Beaconhouse, we aim to ensure that students are given options for their education, and that they are equipped with the ability to make mature and well-informed decisions. Our student body has unrivalled diversity in age, socioeconomic background and nationality. We offer academic options that we hope can serve this diversity in the best way possible.

Beaconhouse has entered into public private partnerships in key locations in the Middle East and South East Asia. We are poised to extend our reach further to new markets across Asia, the Middle East, and Europe.





THE INTERNATIONAL BACCALAUREATE

Founded in 1968, the International Baccalaureate® (IB) is a non-profit educational foundation offering four highly respected programmes of international education that develop the intellectual, personal, emotional and social skills needed to live, learn and work in a rapidly globalising world.

Schools must be authorised by the IB organisation to offer any of the programmes. The IB offers a continuum of education, consisting of four individual programmes. An IB school can be authorised to offer all four or any of the following programmes:

1. The IB Primary Years Programme (PYP) is a curriculum framework designed for students aged 3-12.
2. The IB Middle Years Programme (MYP) is a conceptual curriculum framework for students between the ages of 11-16.
3. The IB Diploma Programme (DP) is a curriculum framework for students between the ages of 16-19.

4. The IB Career Related Programme (CP) is for students between the ages 16-19. It is a framework of international education addressing the needs of students engaged in career-related education.

More than 4,786 schools so far have chosen to teach International Baccalaureate® (IB) programmes with their unique academic rigour and their emphasis on students' personal development. Those schools employ over 70,000 educators, teaching more than one million students worldwide.

In Pakistan, 26 schools are authorised to offer the IB programmes (varying in the programmes offered) out of which 8 authorised and 2 candidate schools are from Beaconhouse School System.







WHAT MAKES THE IB UNIQUE?

The IB programmes are different from other curricula because they:

- encourage students of all ages to think critically and challenge assumptions
- incorporate quality practice from research and global community of schools
- encourage students of all ages to consider both local and global contexts
- develop multilingual students

The IB provides a continuum of education, consisting of four programmes that are united by the IB's philosophy and approaches to learning and teaching. The programmes encourage both personal and academic achievement, challenging students to excel in their studies and in their personal development.

IB programmes incorporate quality practice from national and international research and the IB global community. They encourage students to be international-minded, within a complex and hyper-connected world. Through IB, students learn how to learn.

These four programmes help IB students to:

- ask challenging questions
- think critically
- develop research skills proven to help them in higher education

IB programmes also encourage students to be active in their communities and to take their learning beyond academic studies.



INTERNATIONAL BACCALAUREATE AT BEACONHOUSE

Being a leader in educational excellence, Beaconhouse has always placed an emphasis on preparing young learners to face the challenges that could not have even been dreamt of a few decades ago. When it was decided that some Beaconhouse schools would offer IB programmes, it came from a desire to provide students and parents with more

educational choices at all age levels.

Through the IB framework, Beaconhouse is committed to providing students an inquiry-based and student-centred learning environment; an ongoing international standard professional development to our teachers and to developing communities of lifelong learners.



IB PROGRAMMES AT BEACONHOUSE

Title	Location	Programme (s) Offered	IB Status*
Beaconhouse-Newlands	Islamabad	Authorised for DP and Candidate for PYP	
Beaconhouse College Campus Gulberg	Lahore	DP	Authorised
TNS Beaconhouse Defence	Lahore	MYP and DP	Authorised
Beaconhouse-Newlands	Lahore	PYP	Authorised
Beaconhouse-Newlands	Multan	PYP	Candidate
Beaconhouse Margalla Campus	Islamabad	DP	Authorised
Beaconhouse Defence Campus	Karachi	DP	Authorised
Beaconhouse PECHS Campus	Karachi	DP	Authorised
Beaconhouse Clifton Campus	Karachi	PYP	Authorised

IB Website for further information: www.ibo.org

*As of April 2018





Primary Years Programme

The Primary Years Programme prepares students to be active participants in lifelong journey of their learning.

What is the Primary Years Programme?

The IB Primary Years Programme (PYP) is a curriculum framework designed for students aged 3 to 12. It focuses on development of the whole child as an inquirer, both in the classroom

and the world outside. It is defined by six transdisciplinary themes of global significance which are explored using knowledge and skills derived from six subject areas, with a powerful emphasis on inquiry-based learning. The PYP is flexible enough to accommodate demands of most national or local curricula and provides the best preparation for students to engage in the IB Middle Years Programme (MYP) or any other academic programme.

THE IB PRIMARY YEARS PROGRAMME:

- addresses academic, social and emotional wellbeing of the students
- encourages students to develop independence and to take responsibility for their own learning
- supports students' efforts to gain understanding of the world and to function comfortably within it
- helps students to establish personal values as a foundation upon which international mindedness will develop and flourish

An aim of PYP is to create a transdisciplinary curriculum that is engaging, relevant, challenging and significant for the Early Years and Primary learners.





THE IB PYP AT BEACONHOUSE

Beaconhouse began its pursuit for IB PYP authorisation in September 2014. It currently has one PYP authorised school in Lahore and one in Karachi. The PYP network in BSS is growing with one candidate school in Islamabad and one in Multan.

Beaconhouse PYP authorised and candidate schools envision implementing the spirit of the IB philosophy and pedagogy for the whole child development. IB PYP brings out the best in students with its transdisciplinary curriculum and inquiry-based teaching and methods of assessment that allow freedom of expression and diversity of thought. IB PYP schools at Beaconhouse have adopted inquiry and a student-centred approach as their pedagogy. This teaching approach provides opportunities for students to construct their own knowledge and gain deeper conceptual understanding. Students are encouraged to take ownership of their learning and develop skills and attitudes to help them become global citizens.

A Beaconhouse PYP classroom environment nurtures curiosity while the curriculum combines conceptual

knowledge, skills and attitudes helps them to be independent life-long learners.

Beaconhouse PYP authorised and candidate schools provide a curriculum framework derived from IB-PYP standards and practices. Students work with an international curriculum through a well-thought-out, age-appropriate 'Programme of Inquiry'. The IB PYP Programme of Inquiry is a matrix comprising of six transdisciplinary themes:

- **Who we are**
- **Where we are in time and place**
- **How we express ourselves**
- **How the world works**
- **How we organise ourselves**
- **Sharing the Planet**

These themes address a host of relevant topics in social studies, science, art and language. Mathematics, music and Personal, Social and Physical Education (PSPE) that are taught through integration into the units wherever possible as well as on a standalone basis through inquiry to meet subject goals at every grade level.

The Learner Profile is the mainstay of the IB continuum



and international mindedness among young learners. Every student strives to be:

1. Knowledgeable
2. Inquirer
3. Thinker
4. Caring
5. Principled
6. Open-minded
7. Balanced
8. Risk-Taker
9. Communicator
10. Reflective

Beaconhouse PYP authorised and candidate schools strive to work on all 10 of these attributes, vital for building a student's personality. The Learner Profile attributes are a part of student assessment in a Beaconhouse PYP authorised and candidate schools and every student therefore understands their importance and recognises the need to build upon them. It enables a student to not just be skillful in subject areas and expression but also grow as a human being connected with humanity through a commonality of experiences.

Implementing the PYP curriculum in Beaconhouse schools has opened up exciting avenues for all those involved. Teachers have acquired expertise in student-centred and concept-based pedagogies, school leadership is able to realise its vision of holistic education of global value and parents are satisfied to see their children's enthusiasm to inquire and investigate independently. However, it is the students who benefit the most. By delving into a world of transdisciplinary

themes, children are learning concepts in mathematics and language as well as finding answers to intriguing questions and ideas by reading, observing, researching and experimenting.

We look forward to joining hands with you to nurture confident, open-minded, independent-thinking well-balanced students who are ready and willing to take up global responsibility.





THE IB PYP AT BEACONHOUSE-NEWLANDS LAHORE

Newlands Lahore is an IB world school for the IB Primary Years Programme.

- The school staff takes immense pride in achieving the milestone of being the first PYP authorised school in the BSS community catering to more than 500 students.
- The fact that all teachers are certified IB practitioners trained by international PYP trainers brings authenticity to the programme implementation.
- The school shares each child's daily progress and achievements in the form of digital portfolio through ManageBac- an online portal.
- The school is supported by a very active parent body, strengthening home-school communication through regular Coffee Mornings, weekly assemblies and other school events.
- The school academic calendar is packed with numerous mega events such as Sports Gala, Celebrating Language, Live Art Festival, Math Beyond Boundaries, community service projects, drama performances and many more.
- Other than regular subject skill development, the school also offers a stimulating range of exposure to areas of Art including Drama, Music, Visual art and Rhythmics.
- The state-of-the-art ICT resources and WiFi enabled environment provide swift access to digital learning resources. Classrooms are equipped with multimedia, smart boards and tablets which encourage students to enhance their research skills.
- The school library is a hub of learning that encourages a strong sense of community, fostering the love of reading and research in both students and teachers alike.
- As part of our PD programme, regular collaboration meetings bring all stakeholders together and allow us to review implementation of the IB programme.







THE IB PYP AT BEACONHOUSE-NEWLANDS ISLAMABAD

Beaconhouse-Newlands Islamabad (BNI) is a premier campus offering state-of-the-art infrastructure. It acquired candidacy status in March 2016. BNI's mission is to prepare 3 to 12 years old children to become effective learners who are equipped to perform their role as compassionate and responsible global citizens through a multi-dimensional inquiry-based curriculum that transcends geographical boundaries.

To fulfil the above, the school has been working hard to embody the true spirit of the IB PYP by keeping up with the international expectations of this unique educational programme. It is with the dedication and the commitment of the entire staff that BNI has successfully acquired candidate school status for the IB PYP. To meet the stringent requirements of the IB, PYP teachers are made to take PYP category 1 training almost as soon as they start teaching at BNI.

In order to stay in line with the IB requirements and to ensure smooth running of the PYP at BNI, we focus on all six transdisciplinary themes with the vision to incorporate local and global issues into the curriculum. This also allows students to move beyond the boundaries of learning within subject areas. Inquiry is the pedagogy for a student-centred approach to teaching and learning. The interactive whiteboards and netbooks in classrooms

facilitate inquiry and research-based learning.

The 10 attributes of the IB Learner Profile are not only displayed in the classroom and throughout the entire school, but also integrated in everyday teaching and learning. At BNI, we believe that multilingualism promotes intelligence and enables students to establish connections between apparently disparate concepts. In light of this, Arabic and French are taught as foreign languages at BNI. Students at BNI also show keenness for developing proficiency in Urdu with the same zest as they do for English or other foreign languages offered.

Art is an important medium of learning in the PYP. Students at BNI engage in visual art, music, drama and performing arts; they go to their respective clubs on campus and students can take advantages of the extensive opportunities for fine tuning their skills. The school supplements the IB PYP by offering an extended curriculum program. Along with the core academic requirements of IB, students select from a host of clubs and sports which are managed by professional coaches. The school has multiple swimming pools, basketball courts, outdoor play grounds, swash courts, and much more in order to provide the very best environment in which to host these activities.

A photograph of two children, a girl and a boy, in school uniforms. The girl is in the background, smiling and waving her right hand. The boy is in the foreground, looking towards the camera and waving his right hand. They are both wearing red sweaters and dark blue jackets. The background is a warm, yellowish-brown wall.

Facilities:

- 4.2 acres of purpose-built space
- Boarding and day-boarding facilities
- Multi floor libraries with an e-library and a self-study area
- State-of-the-art science laboratories
- 100 plus Closed Circuit TV cameras in and around campus
- Tree house, gross motor activity area and separate play grounds for ages 0 to 5 years and 5 to 11 years
- On campus Sports Complex offering basketball, volleyball, table tennis, squash, cricket, football fields, multiple swimming pools & a multipurpose gymnasium
- Offering skill-based clubs and societies as part of an extended curriculum with foreign language, Nazra and reinforcement classes
- School transport facility
- Nutritious cafeteria meal
- Field trips and cultural trips within Pakistan and overseas



THE IB PYP AT BEACONHOUSE-NEWLANDS MULTAN

Beaconhouse-Newlands Multan (BNM) is the first international day boarding school in Multan. BNM offers the opportunity for a child to spend most of the hours of the week in the school learning a transdisciplinary approach of connecting knowledge of different disciplines to the real world.

The day boarding facility includes all student activities, academics, co-curricular programme, snacks and meals.

We also have the honour of being the founder of the IB PYP curriculum framework in the city. Currently, BNM is a Candidate School for IB PYP and is fast moving forward on the road to authorisation.

We take pride in our commitment to holistic education and the transdisciplinary framework that focuses on the holistic development of the child as an inquirer, both at school and beyond. The curriculum focuses at nurturing independent learning skills, encouraging every student to take responsibility for their learning.

The programme also incorporates local and global issues into the curriculum, enabling students to look at six themes and to consider the links between them. This supports students' effort to gain understanding of the world and to function effectively within it.

Beaconhouse-Newlands Multan believes that in order to create a generation of lifelong learners, the continuous learning of the teachers is of utmost importance. The teachers at BNM take pride in being the pioneers of teaching a holistic curriculum and their learning is constantly supported by BSS professional development programmes and the IB registered workshops. The teachers monitor, document, measure and provide constant feedback on student learning. Learning is viewed as a continuous journey, where teachers identify students' needs and use ongoing assessment and feedback to plan the next stage of their learning. Teachers at BNM use a wide range of assessment strategies to collect information on each of the elements represented in the curriculum: the understanding of concepts, the acquisition of knowledge, the mastering of skills, the development of the attributes of the learner profile and the ability to take responsible action.

All the teaching and learning is well supported by physical and virtual resources in the school including the school library which has a range of resources to expedite inquiry; the ICT resources that enable all communication and collaboration; access to high end sports facilities and all modern art resources to nurture creativity.





THE IB PYP AT BEACONHOUSE CLIFTON CAMPUS KARACHI

Beaconhouse Clifton Campus is proud of being the largest PYP authorised IB World School in Pakistan. We seek to promote and sustain a learning environment based on the ethos of collaboration and respect. We embrace and value the diversity of our students and staff belonging to different ethnicities and cultural backgrounds.

Our pedagogy emphasises on the constructivist approach to teaching and learning. Students are exposed to a wide range of experiences, written material and digital resources that transcend learning beyond textbooks, inspiring them to take action and make a positive impact on the wider community.

All stakeholders at Clifton Campus including parents and pedagogical leaders work together to provide quality education to students; the school-family-community partnership is continuously enriched with sharing of experiences and thoughts. Mothers and fathers, grandparents, other relatives and caregivers, experts, professionals and community groups participate in goal-oriented activities to support students learning. Their feedback is valued and used to make informed decisions about school policies and practices.

The transdisciplinary nature of the programme helps

students to investigate local and global issues by making interdisciplinary connections whilst developing skills and attitudes required for lifelong learning. Our Curriculum revolves around six transdisciplinary themes supported by the knowledge and concepts derived from Language, Mathematics, Science, Social Studies, PSPE (Personal, Social and Physical Education) and arts.

Faculty at Clifton Campus go through rigorous in-house, face-to-face and online IB training and work diligently to ensure the implementation of IB standards and practices. At Clifton Campus we strongly believe that students learn in different ways and we aim to address the learning needs of every student in order to bring out the best in them. In our students we see confident presenters, talented artists, growing writers and computer geniuses exploring the world around them.







Middle Years Programme

The Middle Years Programme encourages students to become creative, critical and reflective thinkers.

What is the IB Middle Years Programme (MYP)?

The MYP aims to develop active learners and internationally-minded young people who can empathise with others and pursue lives of purpose and meaning.

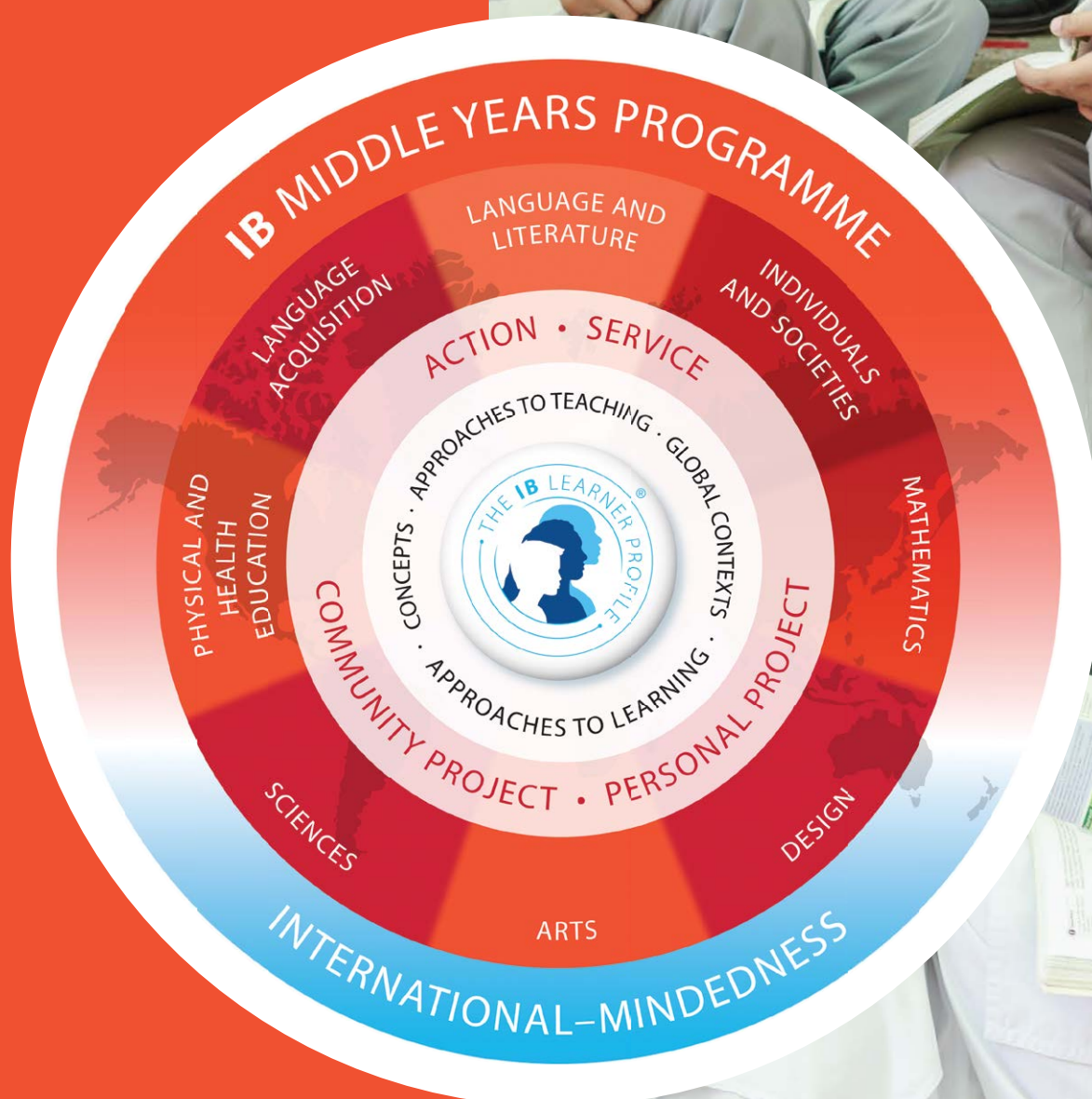
The programme empowers students to inquire into a wide range of issues and ideas of significance locally, nationally and globally. The result is young people who are creative, critical and reflective thinkers.

The MYP was adopted by the IB in 1994. Designed as an inclusive, whole-school programme for students 11-16 years old, the MYP is now implemented by 1,356 schools in 108 countries.

Since being introduced as part of the IB continuum, the MYP has retained the spirit of collaboration encouraged by the dedicated educators by whom it was conceived. After 20 years of rapid growth and development, the programme was fully reviewed and then re-launched in 2014—ready to meet the needs of a new generation of students, teachers and school communities.

THE IB MIDDLE YEARS PROGRAMME:

- holistically addresses students' intellectual, social, emotional and physical wellbeing
- provides students with opportunities to develop the knowledge, attitudes and skills they need in order to manage complexity and take responsible action for the future
- ensures breadth and depth of understanding through study in eight subject groups
- requires the study of at least two languages (language of instruction and additional language of choice) to support students in understanding their own cultures and those of others
- empowers students to participate in service within the community
- helps prepare students for further education





THE IB MYP AT BEACONHOUSE



In the MYP, students study different subjects, yet the approach to topics in all subjects relates to six global contexts identified by IB. These provide the interdisciplinary links and perspectives to all that the students learn.

MYP students will be involved in one or two long-term projects. They may do a community project that enhances awareness of the needs of their community and serves as an opportunity to address one of those needs, either individually or as a group. Near the end of their MYP journey, students carry out a personal project where they

apply subject learning to an area of personal interest.

MYP students apply what they learn in the classroom to real life. This type of service learning not only develops social awareness but is also a highly effective way to learn.

Assessment in the MYP includes different types of tasks, including open-ended & problem-solving activities, hands-on experiments and definitely involves analysis and evaluation. Where possible, peer- and self-assessment is also used.



THE IB MYP AT TNS BEACONHOUSE LAHORE

TNS was the first school in Punjab to introduce the IB MYP. IB authorised TNS in 2012 to offer its Middle Years Programme. TNS has 35 MYP teachers in the faculty who are IB trained to ensure quality delivery, six of whom are IB MYP examiners. More than 200 students in the MYP are exploring practical connections between their studies and the real world.

The MYP was revised by the IB in September 2014 to provide a more rigorous and highly flexible framework that powerfully integrates with local educational requirements. TNS was among the 60 leading IB world schools to register students for electronic assessments. The school registered students in all five disciplines offered by the IB. Our grade 9 (MYP Year 4) students attempted these assessments and their results were better than the world averages.

The MYP consists of eight subject groups:

- Language Acquisition
- Language and Literature
- Individuals and Societies
- Sciences
- Mathematics
- Arts
- Physical and Health Education
- Design

The MYP requires at least 50 hours of teaching time for each subject group in each year of the programme. In later years of the MYP, students have the option to take courses from six of the eight subject groups within certain limits, to provide greater flexibility in meeting local requirements and individual learning needs.

Each year, students in the MYP engage in at least one collaboratively-planned, interdisciplinary unit of study that involves at least two subject groups.



MYP students also complete a long-term personal project where they decide what they want to learn about, identify what they already know, discover what they will need to know to complete the project and create a proposal or provide criteria for completing it.

Approaches to learning serve as a unifying thread throughout all MYP subject groups. These provide the foundation for independent learning and encourage application of knowledge and skills in unfamiliar contexts. Developing and applying these skills help students learn how to learn.

Learning by doing and service have always been shared values of the IB community. IB learners strive to be caring members of the community who demonstrate a commitment to service – making a positive difference to the lives of others and to the environment. Service as action is an integral part of the programme, especially in the MYP community project.

Apart from this, MYP students are required to learn at least two languages (language of instruction and an

additional language of choice). Learning to communicate in a variety of ways is fundamental to their development of intercultural understanding and crucial to their identity affirmation.

Most importantly, students participating in the MYP are more confident in managing their own learning. They are better able to connect their classroom knowledge to the larger world. Most of these students outperform non-IB students in critical analysis skills. They are also better suited for the IB Diploma Programme examinations. MYP students also initiate and nurture a positive school culture and practice inclusion. The MYP ensures that students develop better understanding of global challenges and a commitment to acting as responsible citizens.

For the May 2017 session the world average for MYP E-Assessments was around 35, TNS' lowest score for an E-Assessment registered candidate/student was 35, all students scored 35 or above (out of 56), which took the school average to 42 out of 56. 7 points higher than the world average!



Diploma Programme

The IB Diploma Programme (DP) aims to develop students who have excellent breadth and depth of knowledge – students who flourish physically, intellectually, emotionally and ethically. The DP was established to provide students with a balanced education, to facilitate geographic and cultural mobility and to promote international understanding.

It was created by teachers at the

International School of Geneva, with assistance from several other international schools. Since then, innovative and committed teachers and examiners from around the world have played a significant role in the development of the programme. Presently, there are over 3,182 schools offering the DP in 153 different countries worldwide.

WHAT IS THE IB DIPLOMA CURRICULUM FRAMEWORK?

The Diploma curriculum is made up of the DP core and six subject groups. Made up of the three required components, the DP core aims to broaden students' educational experience and challenge them to apply their knowledge and skills.

The three core elements are:

- **Theory of knowledge**, in which students reflect on the nature of knowledge and on how we know what we claim to know.
- **The extended essay**, which is an independent, self-directed piece of research, finishing with a 4,000-word paper.
- **Creativity, activity, service**, in which students complete a project related to those three concepts.

The six subject groups are:

- Studies in language and literature
- Language acquisition
- Individuals and societies
- Sciences
- Mathematics
- The arts

There are different courses within each subject group.





THE IB DP AT BEACONHOUSE-NEWLANDS ISLAMABAD

Beaconhouse-Newlands Islamabad (BNI) is an authorised IB World School offering the Diploma Programme and a candidate school for the Primary Years Programme. At BNI, we value the IB programmes for their holistic approach and focus on developing well-rounded personalities through the IB Learner Profile. Academics as well as BNI's extended curriculum work together to support this aim.

Our extended curriculum programme lays special emphasis on every student's involvement in clubs and sports under the supervision of our highly competent and dedicated teachers and instructors. Students pursue their passion by choosing between a variety of different clubs and societies ranging from music, drama, dance to robotics.

The IB PYP for children aged 3-12 years nurtures and develops young students as caring, active participants in a lifelong journey of learning. Through its inquiry-led, transdisciplinary framework, the PYP challenges students to think for themselves and take responsibility for their learning as they explore local and global issues and opportunities in real-life contexts.

The IB DP prepares students aged 16 to 19 years for

rigorous university life by giving them an opportunity to conduct research and produce high quality work, to learn about learning and to explore their own strengths, aptitudes and emerge as lifelong learners.

BNI facilitates students with state-of-the-art classrooms, studios, science and technology laboratories and the library. We have subscriptions to the very best e-libraries to support students on their way to success. BNI is committed to fostering international-mindedness through the IB Programmes.

Our team of trained, highly dedicated and committed teachers and counsellors as well as our purpose-built campus and sports facilities make BNI an ideal place to pursue the unique curriculum that combines academics, sports and research.



**IB DP subjects offered at Beaconhouse
Newlands Islamabad:**

Group 1

Studies in Language and Literature

- English SL/ HL
- Urdu SL/ HL

Group 2

Language Acquisition

- French Ab Initio SL

Group 3

Individuals and Societies

- Business Management SL/ HL
- Economics SL/ HL
- Information Technology in a Global Society SL/ HL
- History SL/ HL
- Business Management SL/ HL

Group 4

Sciences

- Biology SL/ HL
- Chemistry SL/ HL
- Physics SL/ HL
- Computer Science SL/ HL

Group 5

Mathematics

- Mathematics SL
- Mathematics HL
- Mathematical Studies SL

Group 6

The Arts

- Visual Arts SL/ HL

Facilities:

- 4.2 acres of purpose-built space
- Authorised for the IB Diploma Programme and at the final stage of PYP authorisation
- Boarding and day-boarding facilities
- Multi-floor libraries with an e-library and a self-study area
- State-of-the-art science laboratories
- 100 plus Closed Circuit TV cameras in and around campus
- Tree house, gross motor activity area and separate playgrounds for ages 0 to 5 years and 5 to 11 years
- On-campus Sports Complex offering basketball, volleyball, table tennis, squash, cricket, football fields, multiple swimming pools & a multipurpose gymnasium
- Offering skill-based clubs and societies as part of an extended curriculum with foreign language, Nazra and reinforcement classes
- School transport facility
- Nutritious cafeteria meal
- Field trips and cultural trips within Pakistan and overseas





THE IB DP AT BEACONHOUSE MARGALLA CAMPUS ISLAMABAD

Beaconhouse Margalla Campus Islamabad is a flagship campus of the BSS Northern Region, and is one of the country's leading educational institutions. The school has been offering the International Baccalaureate Diploma Programme since 2015, when it became an authorised IB DP school.

BMI has a very diverse student population including children of diplomats, bureaucrats and businessmen.

The BMI IB DP programme aims to provide our students with maximum opportunities to become 21st century learners. The IB curriculum is designed in such a way that students become well-rounded individuals who are able to contribute to society. The school works hard to implement the programme in its true spirit in order to provide the most authentic IB experience possible.

BMI-IB strives to ensure a smooth and productive two-year journey, with the overall purpose of graduating a batch of empowered, independent and self-aware young men and women. Our experienced and dedicated career advisors guide and assist students in developing a sense of self-awareness, and in career and university selection. As a result of this comprehensive programme, our graduates have obtained excellent university placements, getting into well-reputed universities across the world

including those in USA, Europe, Canada and Australia.

BMI aspires to develop critical thinking and high moral values in our students so that they can “think deeply and act honourably”.



IB DP subjects offered at Beaconhouse Margalla Campus:

Group 1

- English Language & Literature
- Urdu Literature
- English Literature

Group 2

- French
- German
- Mandarin

Group 3

- Information Technology in Global Society
- Business Management
- Economics
- Environmental System and Societies

Group 4

- Physics
- Biology
- Chemistry
- Computer Science

Group 5

- Mathematics HL
- Mathematics SL
- Mathematical Studies

Group 6

- Visual Arts

CAS may include:

- Retreat - A three day camping experience
- Paragliding
- Service activities at old homes and orphanages
- Candle making
- Theatre
- T-shirt printing
- Clay modelling
- Cricket
- Basketball
- Baseball
- Tennis
- Riding
- Planting an organic garden
- First aid training

Facilities:

- Wi-Fi enabled IB Block
- Well-equipped IT laboratory and Integrated Communication Technology
- State-of-the-art Media Suite
- Research workstations in libraries
- Sports facilities (gymnasium, sports ground, basketball court, table tennis)
- IB career counsellor
- Well-equipped science laboratories
- Project-based Learning
- Personal student lockers





THE IB DP AT TNS BEACONHOUSE LAHORE

TNS Beaconhouse Lahore is authorised to offer the IB Diploma Programme (IB DP) and aims to develop critical and compassionate thinkers who, as learners in the 21st century, are prepared for success at university and life beyond. The critical thinking required for the IB DP gives students a significant advantage at university. The IB Diploma is recognised as an entry qualification into university with leading universities specifically welcoming applications from IB Diploma students.

The international aspect of the IB Diploma offers interesting opportunities for students.

IB professional development helps teachers and administrators develop a deeper understanding of what it means to be an effective teacher or administrator, bringing them to the forefront of their field. TNS Beaconhouse is fully committed to teachers' professional development.

Seven of our teachers are IB Diploma examiners or moderators.

To ensure a quality educational experience, all IB Diploma teachers attend IB training workshops. IB Diploma students have a Study Lounge attached to the library to ensure a dedicated and quiet space for self-

study. Classrooms are subject-specific.

CAS (Creativity, Activity, and Service) opportunities have included in-school activities such as assembly presentations and out-of-school activities such as performing a student-written and directed play performed at Alhamra.

TNS has a dedicated University Admissions Counsellor and afternoon SAT classes are offered on site. All of TNS' students have received offers to their first-choice universities.



IB DP subjects offered at TNS Beaconhouse:

- English Literature
- French
- Information Technology in a Global Society
- History
- Geography
- Economics
- Environmental Systems & Societies
- Physics
- Chemistry
- Biology
- Business Management
- Mathematics
- Mathematical Studies

Facilities:

- Fully-resourced classrooms of standard international sizes
- Climate-controlled environment
- Music and dance studios
- TNS Beaconhouse Atelier (Art Suite)
- Age-appropriate science laboratories/preparation room
- Interactive whiteboards and computers in all classrooms
- ICT and Media Suite
- Special Learning Needs Centre
- Reading Room/Language Room
- Counselling and Career Guidance Centre
- Nutrition-managed cafeteria
- Age-appropriate, indoor, heated swimming pool
- Age-appropriate libraries, including a three-storey Learning Centre
- The Access Centre (career guidance unit for older students)
- Design and Technology Studio
- Multi-purpose halls including an underground gymnasium/auditorium
- Underground parking (for special use)
- Rooftop garden
- Elevator access (for special use)
- Age-appropriate school playgrounds
- Access to Beaconhouse Sports Complex
- Props room/Green room/changing and office facilities
- A dedicated IB Diploma Study Lounge

Classroom technology:

- Loft-libraries
- Interactive whiteboards with digital multimedia projector and speakers
- Handheld voting devices
- Personal all-in-one computers (desktops, laptops and tablets)
- Touchscreen netbooks
- Microsoft Xbox 360 consoles with Kinect
- Visualiser
- Audio recorder
- Digital and video cameras
- Internet facility
- Regular and colour printers, scanners
- Plasma televisions/DVDs/headphones



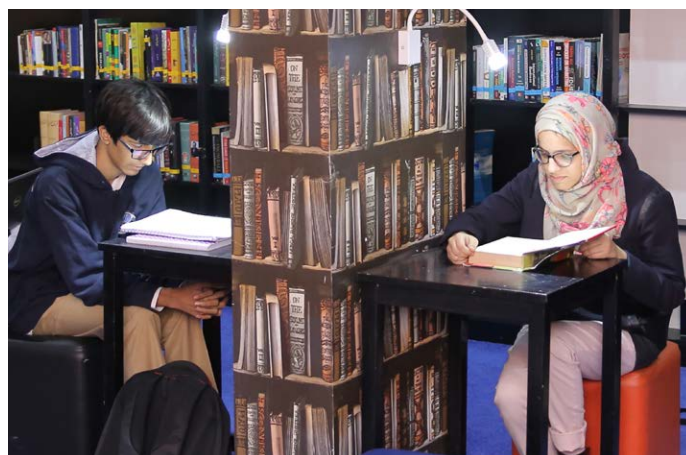
THE IB DP AT BEACONHOUSE COLLEGE CAMPUS GULBERG LAHORE

Beaconhouse College Campus Gulberg is authorised to offer the IB Diploma and aims to be a leading IB DP World School by setting the highest standards of academic excellence. The administration and staff has been trained to build a community of the best teaching and learning practices, with passionate students and teachers who actively make a difference for themselves and their surroundings.

We make sure that our students are offered opportunities to hone their skills and abilities. Beaconhouse College Campus Gulberg prepares its IB DP students to be

successful in an ever-changing world and become well-rounded global citizens.

CAS (Creativity, Activity, and Service) is a mandatory core component of the IB DP. It aims to provide a counterbalance to the academic rigour of the educational programme. Through this programme, students identify areas of strengths, develop areas of growth, undertake challenges and develop new skills in the process. For learning becomes meaningful, more spontaneous and student-centered when it transgresses the walls of the classrooms and takes place in the real world.



IB DP subjects offered at BCCG:

- English Language and Literature
- Urdu Language and Literature
- Business Management
- Economics
- Global Politics
- Environmental Systems and Societies
- Biology
- Computer Science
- Chemistry
- Physics
- Mathematical Studies
- Mathematics
- Visual Arts

CAS may include:

- Astronomy
- Culinary
- Musicology
- Photography
- Film making
- Gardening
- Post production workshops
- Arts and Crafts workshops
- CAS Camp Trips
- 3-D Modelling
- Paragliding
- Horse Riding
- Repelling, Rock Climbing
- Hiking
- Archery
- Cliff Diving
- SEPLA-Internships
- RABTT-Internships
- TCF-Internships
- FESF-MOVE internships

Facilities:

- Fully paid CAS programme
- Air-conditioned classrooms
- Multi-media facilities in all classrooms
- Well-resourced Library
- State of the art Science Laboratories
- Art Studio
- On-Campus SAT preparation
- Access Centre (career counselor on-campus)
- Interactive whiteboards
- Wi-Fi enabled block
- Common room with student lockers
- Gym and Music facilities on-campus
- Sports facilities with able instructors





THE IB DP AT BEACONHOUSE PECHS CAMPUS KARACHI

Equipping pupils in line with global developments in academics, students at PECHS now have an added option to study the IB DP as the school offers the IB Diploma, an international and reflective approach to education.

The school is committed to fulfilling students' individual

learning needs and also, to equipping them with 21st century skills in order to be successful in their future career options. Due to the diverse range of assessment tools in the IB, our focus is on the development of the IB learner profile; time management skills and self-evaluation practices so that the IB's holistic education culture is developed within the school community.



IB DP subjects offered at PECHS:

- English Language and Literature
- French ab initio
- Economics
- Business Management
- Biology
- Chemistry
- Physics
- Computer Science
- Mathematics
- Visual Arts
- Environmental Systems and Societies
- Psychology

CAS may include:

- Photoshop/Editing
- Sewing/Handicrafts
- Acting Club
- Cooking
- Calligraphy
- Charity hikes
- Dance
- Tennis
- Rock climbing
- Reading buddies
- TCF Social Internship Programme
- Farming/Gardening

Facilities:

- Located in the widely accessible area of PECHS, Karachi
- Wi-Fi enabled IB block
- Well-equipped IT laboratory and integrated communication technology
- State-of-the-art media suite with the latest equipment for audio and video recording and filmmaking facilities
- Research workstations in libraries with online subscriptions to collections and databases
- Sports facilities including a swimming pool, gymnasium, sports field and a basketball court
- Access Centre with a team of dedicated career advisors and counsellors
- Dedicated state-of-the-art IB laboratories for Physics, Biology, Chemistry and Media Sciences
- Open spaces and student cafeteria





THE IB DP AT BEACONHOUSE DEFENCE CAMPUS KARACHI

Our students and parents are learning to understand and appreciate the IB philosophy, which is an alternative option to the A Level. The IB DP is internationally and nationally recognised and the school aims to develop students with excellent breadth and depth of knowledge

— students to flourish intellectually, emotionally, physically and ethically. Beaconhouse Defence Campus looks forward to welcoming a diverse range of students with creative minds into an enriching and insightful IB journey.



**IB DP subjects offered at Beaconhouse
Defence Campus:**

- English Language and Literature
- French ab initio
- Economics
- Business and Management
- Biology
- Chemistry
- Physics
- Computer Science
- Mathematics
- Visual Arts

CAS may include:

- Yoga or martial arts
- Sports: sailing, scuba diving, horse riding, swimming, table tennis
- Creating a mural
- Choreography
- Theatre or dance
- School newspaper
- Beach clean-up
- First aid training

Facilities:

- Wi-Fi enabled IB block
- Well-equipped IT laboratory and integrated communication technology
- Research workstations in the IB Library/E-learning Centre with online subscriptions to collections and databases
- Air-conditioned library, laboratories and IB classrooms
- Sports facilities including gymnasium, spacious sports ground and basketball courts
- A team of dedicated career counsellors
- State-of-the-art science laboratory
- Dedicated space for IB Visual Arts



Northern Region

Beaconhouse-Newlands Islamabad

Hill View Road, Mohra Noor Banigala, Islamabad
Tel: 051-2613935-7, 0300-8434028

Beaconhouse Margalla Islamabad

Pitras Bokhari Road, Sector H-8/4, Islamabad
Tel: 051-4922146, 0307-7779222

Central Region

TNS Beaconhouse Lahore

483/3 Sector G, Phase V, DHA, Lahore
Tel: 042-37176241-44

Beaconhouse College Campus Gulberg Lahore (IB)

3-C, Main Zafar Ali Road, Gulberg V, Lahore
Tel: 042-35775776

Beaconhouse-Newlands Lahore

632/1, Block J, Phase VI, DHA, Lahore
Tel: 042-37180574-78
UAN: 042-111-111-020

Beaconhouse-Newlands Multan

4-5 Officers Colony, Khanewal Road, Multan
Tel: 061-6224456-8
UAN: 042-111-111-020

Southern Region

Beaconhouse Clifton Campus Karachi

F-T, 2/3, McNeil Road, Clifton, Karachi
Tel: 021-35678513, 35659190

Beaconhouse Defence Campus Karachi

207-A, Saba Avenue, Phase VIII, DHA, Karachi
Tel: 021-35847083-84

Beaconhouse PECHS Campus Karachi


A-35,P/1, Block 6, PECHS, Karachi
Tel: 021-34380045-50



The largest network of
IB World Schools
offering authorised
PYP, MYP and **DP**
programmes across
Pakistan.



Beaconhouse

www.ib.beaconhouse.net
www.beaconhouse.net | www.beaconhousetimes.net
 [BeaconhouseSchoolSystemOfficial](#)

Download the **Beaconhouse App**

